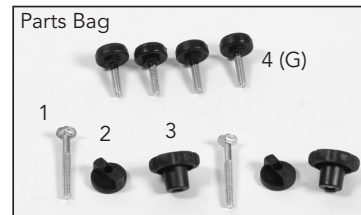


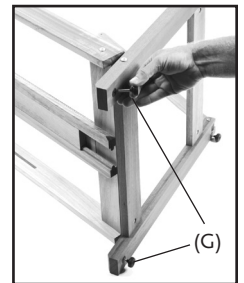
Please open box, take out all pieces and check for damage before beginning assembly.



- 1. 2 - Bolts
- 2. 2 - Slide Guides
- 3. 2 - Black Plastic Knob
- 4. 4 - Adjustable Feet

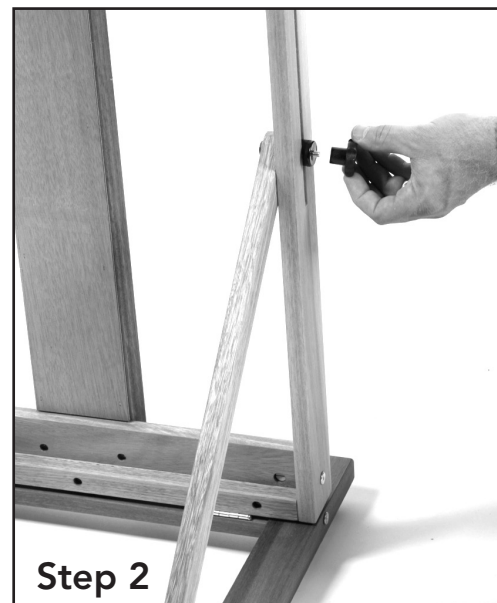
**Step One:**

Lay Easel Frame on its side (D). Attach all 4 adjustable feet. (G)



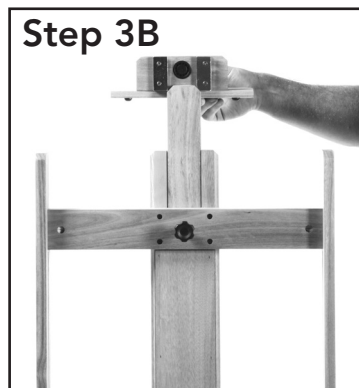
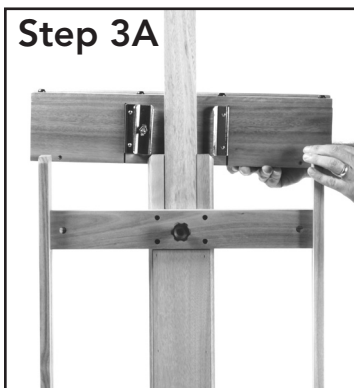
**Step Two:**

Stand easel upright. Attach back support leg (F) to frame (D) using 1 Bolt, 1 slide guide and 1 black plastic knob. Repeat on other side.



**Step Three:**

- A. Slide Large Painting Tray (E) on to mast, tighten black knobs.
- B. Slide Small Painting Tray (A) on to mast, tighten black knob.



**Step 2**